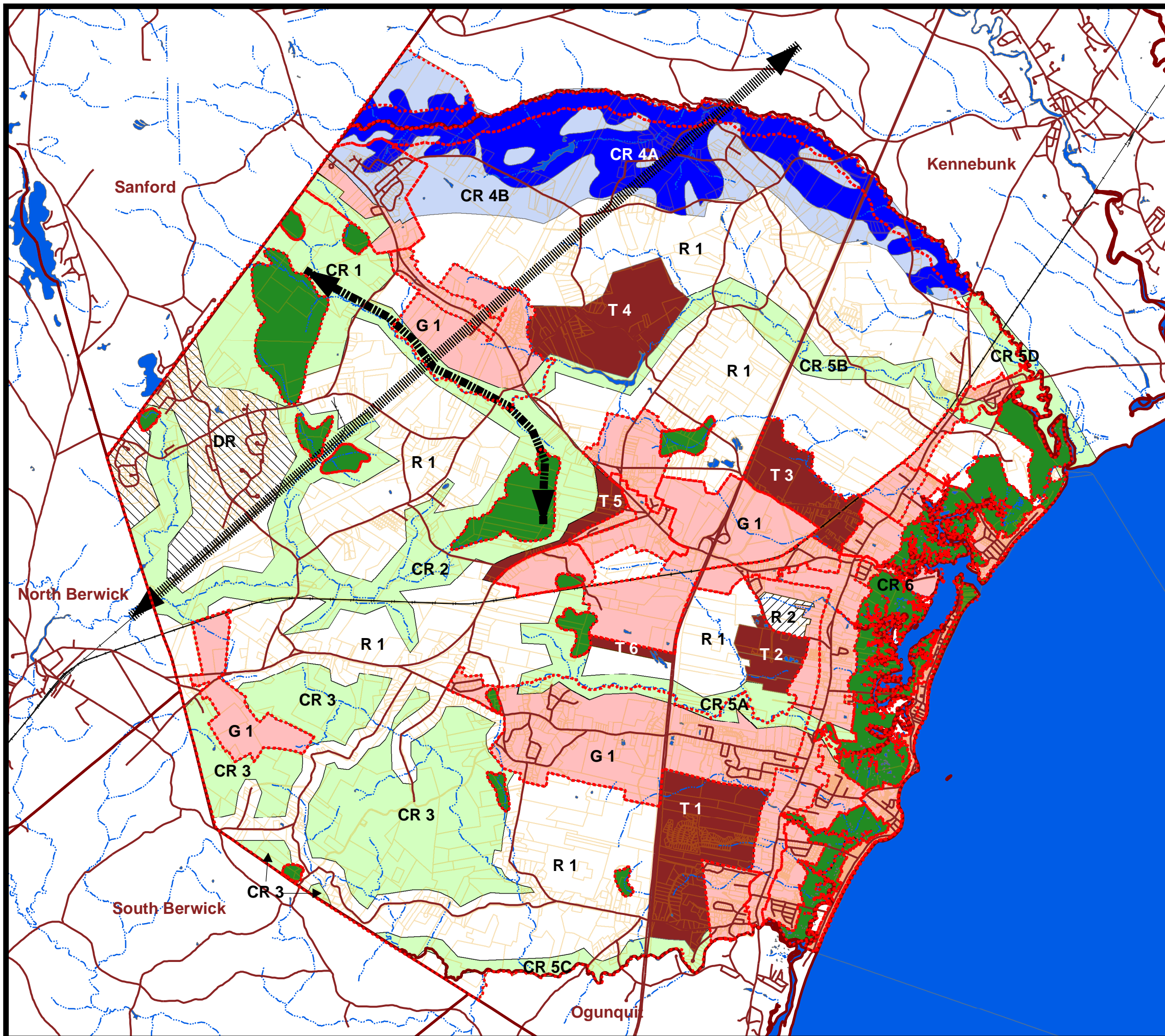


Town of Wells Comprehensive Plan Map 15 Future Land Use Plan Growth, Transitional, Rural, and Critical Rural Areas

- Growth Areas**
- G 1 - Developed Areas and Previously Designated Growth Areas
- Transitional Areas**
- T 1 - Moody
 - T 2 - Community College
 - T 3 - Burnt Mill
 - T 4 - Hobbs Farm
 - T 5 - Crediford Limited Commercial
 - T 6 - Limited Industrial
- Rural Areas**
- R 1 - Rural Area Previously Designated
 - R 2 - Chapel Road Rural Extension
 - DR - Developed Rural
- Critical Rural Areas**
- CR 1 - Fenderson Commons
 - CR 2 - The Heath and West Brook Corridors
 - CR 3 - Tatnic Hills/Mt. Agamenticus Area
 - CR 4A - Branch Brook Aquifer Travel Time <200 days
 - CR 4B - Branch Brook Aquifer Recharge Area
 - CR 5A - Webhannet River Corridor
 - CR 5B - Merriland River Corridor
 - CR 5C - Ogunquit River
 - CR 5D - Lower Branch Brook (not in Recharge Area)
 - CR 6 - Existing Resource Protection Districts
- Trails**
- Heath-Fenderson Greenway
 - Eastern Trail
- Other Symbols:**
- Existing Zoning Districts (dotted red line)
 - York County Towns (solid red line)
 - Tax Parcels - March 04 (yellow outline)



Data provided by Maine Office of GIS
Future Land Use Areas Digitized from Cmte Proposals
Printed 3 February 2005 FINAL

