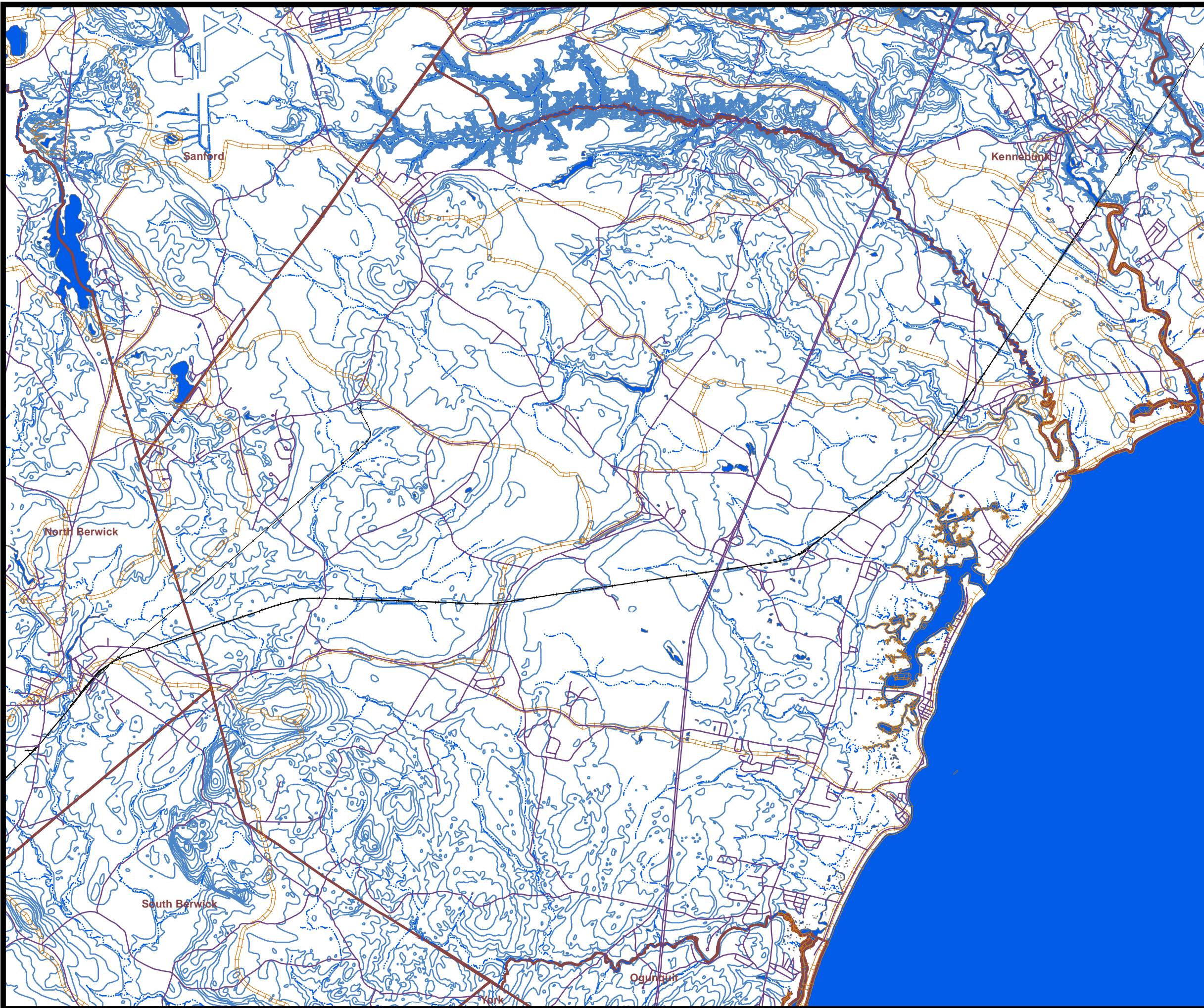


Town of Wells Comprehensive Plan Map 5 Topography and Drainage Divides



Legend

- Public Roads
- Railroads
- Streams
- Drainage Divides
- York County Towns
- Topography
- Coastline
- Rivers
- Ponds

Data provided by Maine Office of GIS
Printed 15 September 2004

4



1 inch equals 5,000 feet

