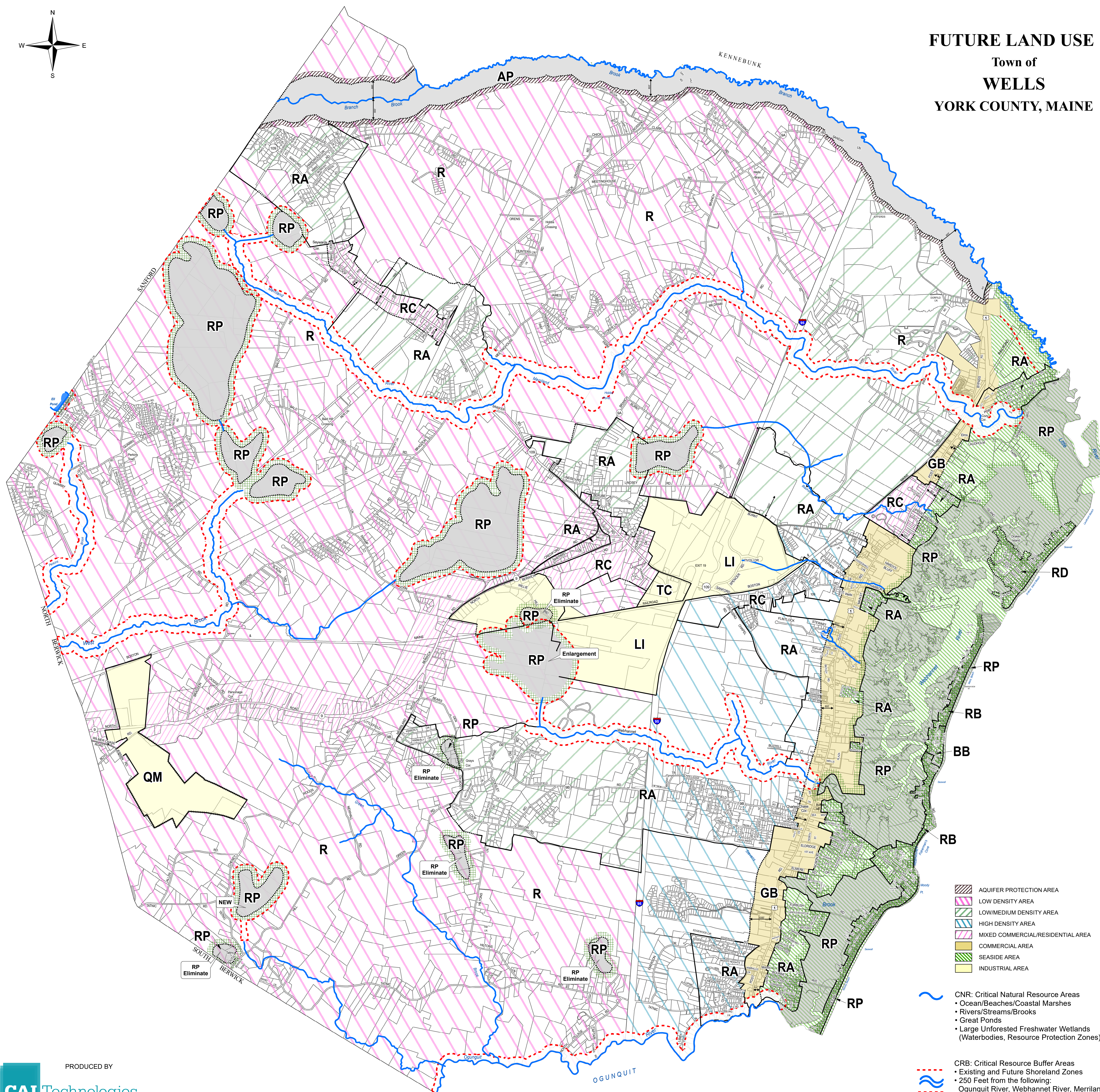


FUTURE LAND USE

Town of
WELLS
YORK COUNTY, MAINE



- AQUIFER PROTECTION AREA
- LOW DENSITY AREA
- LOW/MEDIUM DENSITY AREA
- HIGH DENSITY AREA
- MIXED COMMERCIAL/RESIDENTIAL AREA
- COMMERCIAL AREA
- SEASIDE AREA
- INDUSTRIAL AREA

- CNR: Critical Natural Resource Areas
 - Ocean/Beaches/Coastal Marshes
 - Rivers/Streams/Brooks
 - Great Ponds
 - Large Unforested Freshwater Wetlands (Waterbodies, Resource Protection Zones)

- CRB: Critical Resource Buffer Areas
 - Existing and Future Shoreland Zones
 - 250 Feet from the following:
 - Ogunquit River, Webhannet River, Merriland River, Perkins Brook, West Brook, Branch Brook (Non-AP)

PRODUCED BY



11 PLEASANT STREET, LITTLETON, NH 03561
800.322.4540 - WWW.CAI-TECH.COM

SCALE

