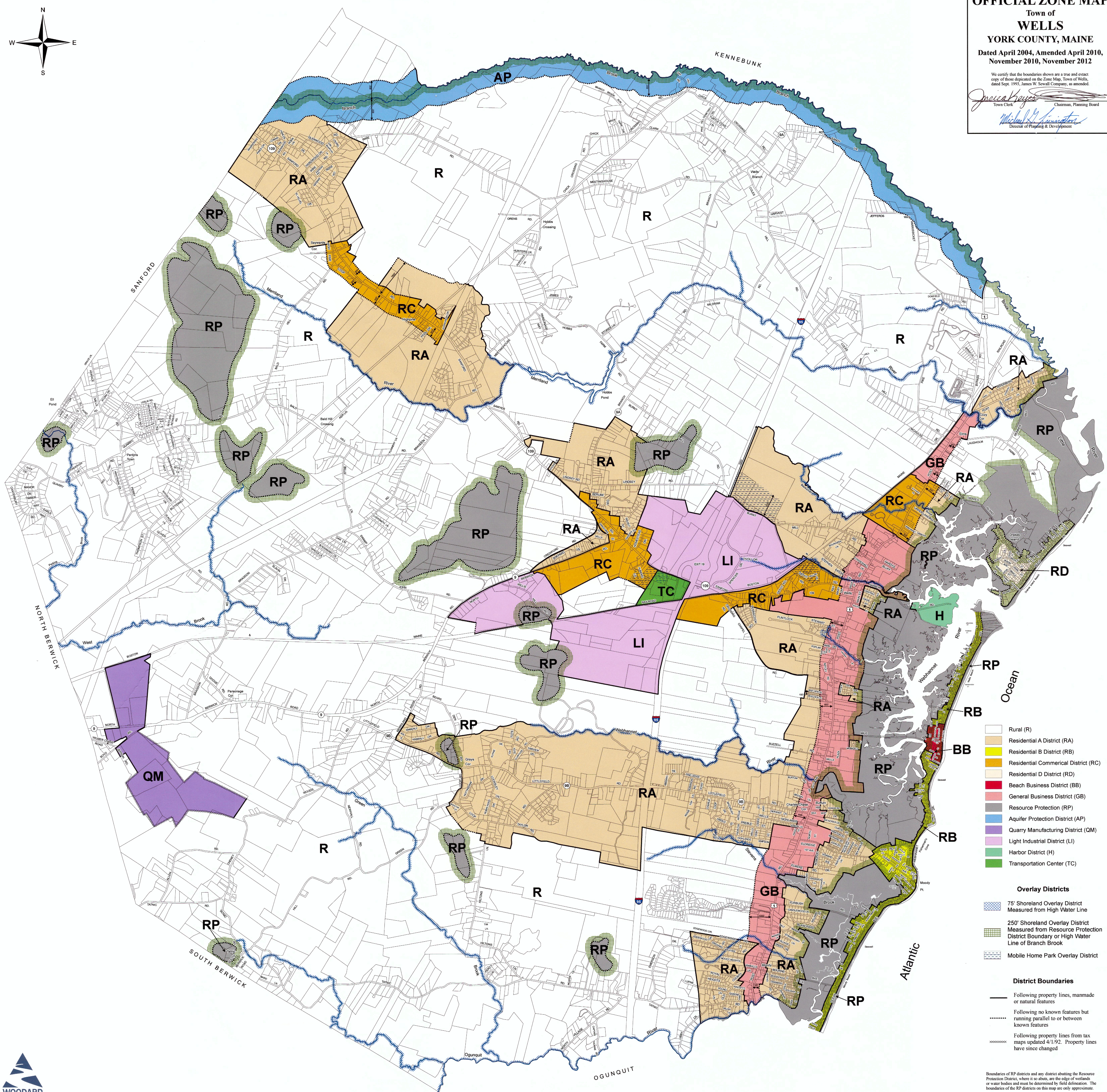


**OFFICIAL ZONE MAP**  
Town of  
**WELLS**  
YORK COUNTY, MAINE  
Dated April 2004, Amended April 2010,  
November 2010, November 2012

We certify that the boundaries shown are a true and exact copy of those deposited on the Zone Map, Town of Wells, dated Sept. 1993, James W. Sewall Company, as amended.

*Jessica Hayes*  
Town Clerk  
Chairman, Planning Board

*Michael W. Switzer*  
Director of Planning & Development



- Rural (R)
- Residential A District (RA)
- Residential B District (RB)
- Residential Commercial District (RC)
- Residential D District (RD)
- Beach Business District (BB)
- General Business District (GB)
- Resource Protection (RP)
- Aquifer Protection District (AP)
- Quarry Manufacturing District (QM)
- Light Industrial District (LI)
- Harbor District (H)
- Transportation Center (TC)

- Overlay Districts**
- 75' Shoreland Overlay District Measured from High Water Line
  - 250' Shoreland Overlay District Measured from Resource Protection District Boundary or High Water Line of Branch Brook
  - Mobile Home Park Overlay District

- District Boundaries**
- Following property lines, manmade or natural features
  - Following no known features but running parallel to or between known features
  - Following property lines from tax maps updated 4/1/92. Property lines have since changed

Boundaries of RP districts and any district abutting the Resource Protection District, where it so abuts, are the edge of wetlands or water bodies and must be determined by field delineation. The boundaries of the RP districts on this map are only approximate.

Property line information was compiled from existing tax maps prepared by James W. Sewall Co., 1975, Updated 9/97, Updated 4/99, Updated 4/04, Updated 8/10, Updated 8/13.

