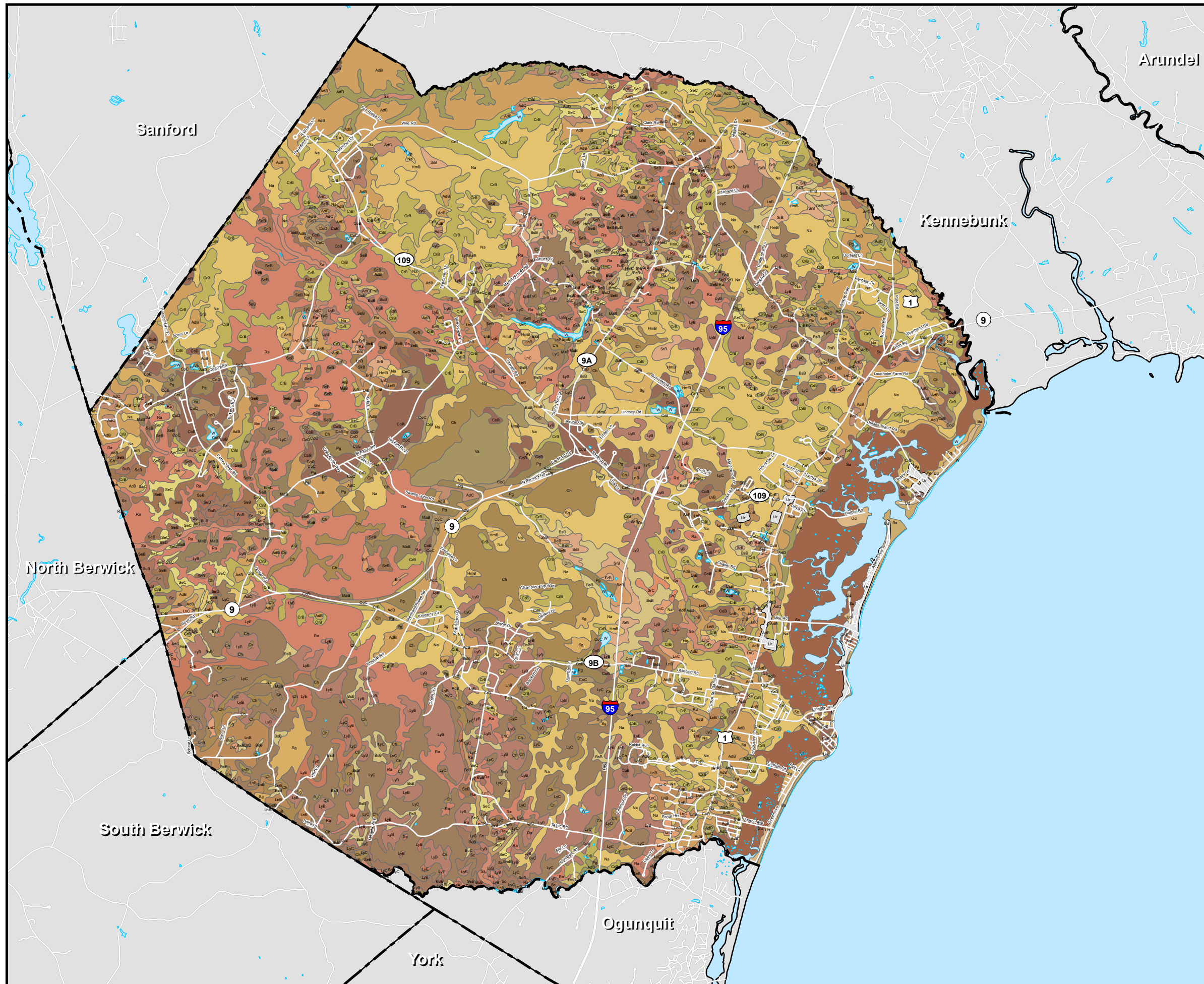


# Town of Wells Comprehensive Plan 2016 Map 14

## NRCS Soils

- AdB: Adams loamy sand, 0 to 8 percent slopes
- AdC: Adams loamy sand, 8 to 15 percent slopes
- AdD: Adams loamy sand, 15 to 40 percent slopes
- AgB: Adams-Urban land complex, 0 to 8 percent slopes
- AIB: Allagash very fine sandy loam, 3 to 8 percent slopes
- AIC: Allagash very fine sandy loam, 8 to 15 percent slopes
- Ba: Beaches
- BeB: Becket very stony fine sandy loam, 3 to 8 percent slope s
- Bm: Biddeford mucky peat
- BrB: Brayton and Westbury fine sandy loams, 0 to 8 percent slopes
- BsB: Brayton and Westbury very stony fine sandy loams, 0 to 8 percent slopes
- BuB: Buxton silt loam, 3 to 8 percent slopes
- BuC: Buxton silt loam, 8 to 15 percent slopes
- BuD: Buxton silt loam, 15 to 25 percent slopes
- Ch: Chocorua peat
- CoB: Colton gravelly loamy coarse sand, 0 to 8 percent slope s
- CoC: Colton gravelly loamy coarse sand, 8 to 15 percent slopes
- CoD: Colton gravelly loamy coarse sand, 15 to 25 percent slopes
- CoE: Colton gravelly loamy coarse sand, 25 to 45 percent slopes
- CrB: Croghan loamy sand, 0 to 8 percent slopes
- CuB: Croghan-Urban land complex, 0 to 8 percent slopes
- Dm: Dumps
- EmB: Elmwood fine sandy loam, 0 to 8 percent slopes
- EmC: Elmwood fine sandy loam, 8 to 15 percent slopes
- HeB: Hermon fine sandy loam, 3 to 8 percent slopes
- HeC: Hermon fine sandy loam, 8 to 15 percent slopes
- HmB: Hermon very stony fine sandy loam, 3 to 8 percent slope s
- HmC: Hermon very stony fine sandy loam, 8 to 15 percent slopes
- HmD: Hermon very stony fine sandy loam, 15 to 25 percent slo pes
- LnB: Lyman fine sandy loam, 3 to 8 percent slopes
- LnC: Lyman fine sandy loam, 8 to 15 percent slopes
- LnD: Lyman fine sandy loam, 15 to 25 percent slopes
- LyB: Lyman-Rock outcrop complex, 3 to 8 percent slopes
- LyC: Lyman-Rock outcrop complex, 8 to 15 percent slopes
- LyE: Lyman-Rock outcrop complex, 15 to 80 percent slopes
- MaB: Madawaska fine sandy loam, 0 to 8 percent slopes
- Na: Naumburg sand
- Pg: Pits, gravel
- Po: Podunk and Winooski soils
- Ra: Raynham silt loam
- RoC: Rock outcrop-Lyman complex, 8 to 15 percent slopes
- Ru: Rumney loam
- Sa: Saco mucky silt loam
- Sc: Scantic silt loam
- SeB: Scio silt loam, 3 to 8 percent slopes
- SeC: Scio silt loam, 8 to 15 percent slopes
- SeD: Scio silt loam, 15 to 25 percent slopes
- Sg: Sebago peat
- SkB: Skerry fine sandy loam, 0 to 8 percent slopes
- SrB: Skerry very stony fine sandy loam, 0 to 8 percent slope s
- SrC: Skerry very stony fine sandy loam, 8 to 15 percent slopes
- Su: Sulfhemists, frequently flooded
- Ud: Udipsamments-Dune land complex
- Ur: Urban land
- Va: Vassalboro peat
- Vp: Vassalboro peat, ponded
- W: Water bodies



Data created and provided by U.S. Department of Agriculture, Natural Resources Conservation Service  
 Notes: This data set is a digital soil survey and generally is the most detailed level of soil geographic data developed by the National Cooperative Soil Survey. The information was prepared by digitizing maps, by compiling information onto a planimetric correct base and digitizing, or by revising digitized maps using remotely sensed and other information.

