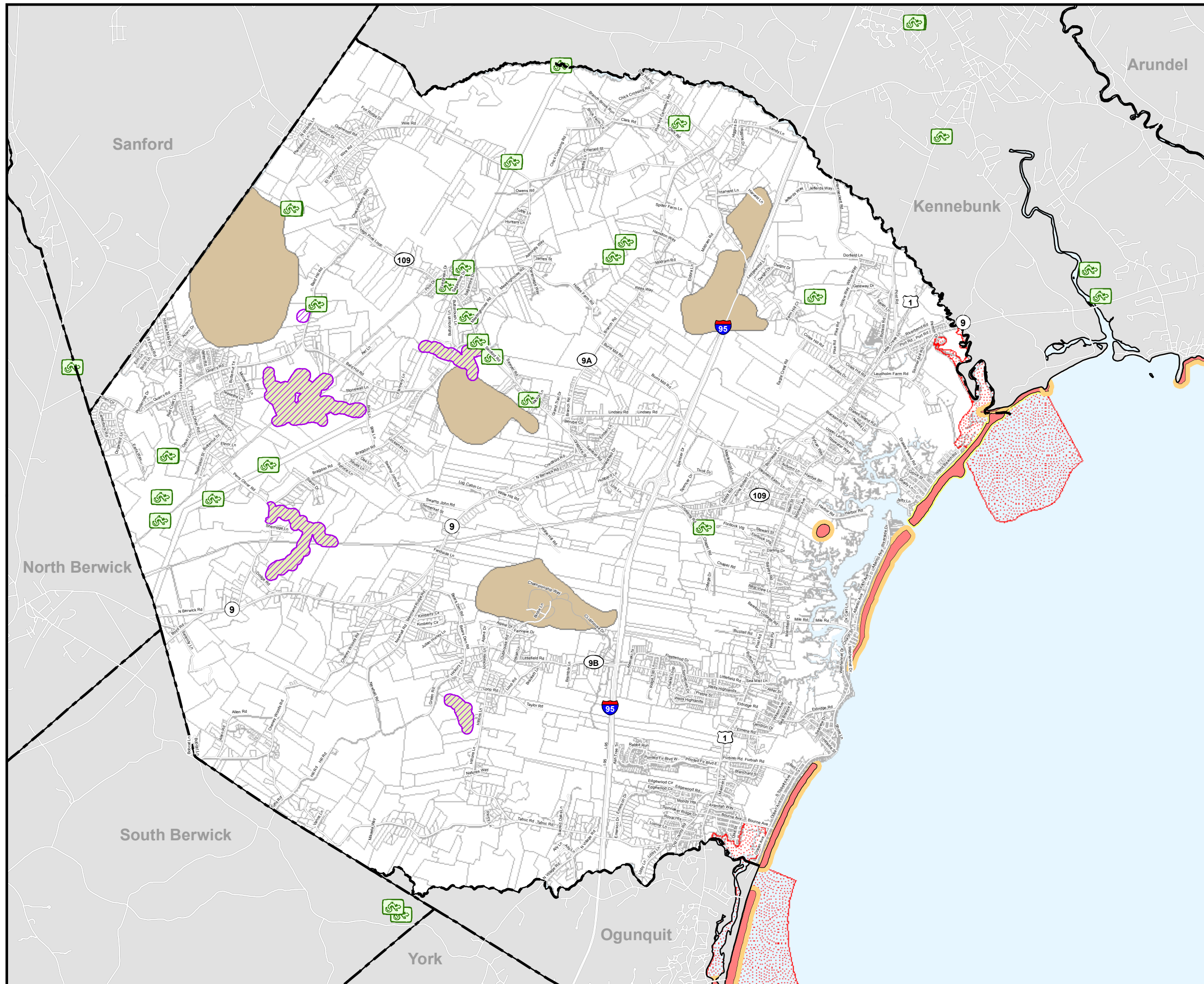


**Town of Wells
Comprehensive Plan
2016
Map 15**

Wildlife Habitats



-  Vernal Pool
-  Inland Waterfowl/Wader Habitat - shoreland zoning
-  Inland Waterfowl/Wader Habitat - NRPA
-  Piping Plover/Least Tern Essential Habitat
-  Deer Wintering Areas
- Shorebird Habitat
 -  100 ft buffer
 -  250 ft buffer
 -  Habitat

Data provided by the Maine Office of GIS
Notes: Entire parcels are colored according to existing land use code on file with the Wells Tax Assessor, even if only a portion of the parcel is used for that purpose. Please note that this will be slightly different than the land use code as used by the Town Zoning code. Existing Land Use coding was obtained from the Assessing Database and has not been field checked.

