

P/O 72-2

72

P/O 72-6

15A

15  
Swright

17A  
Tree  
Sward

19  
Campbell  
372/48

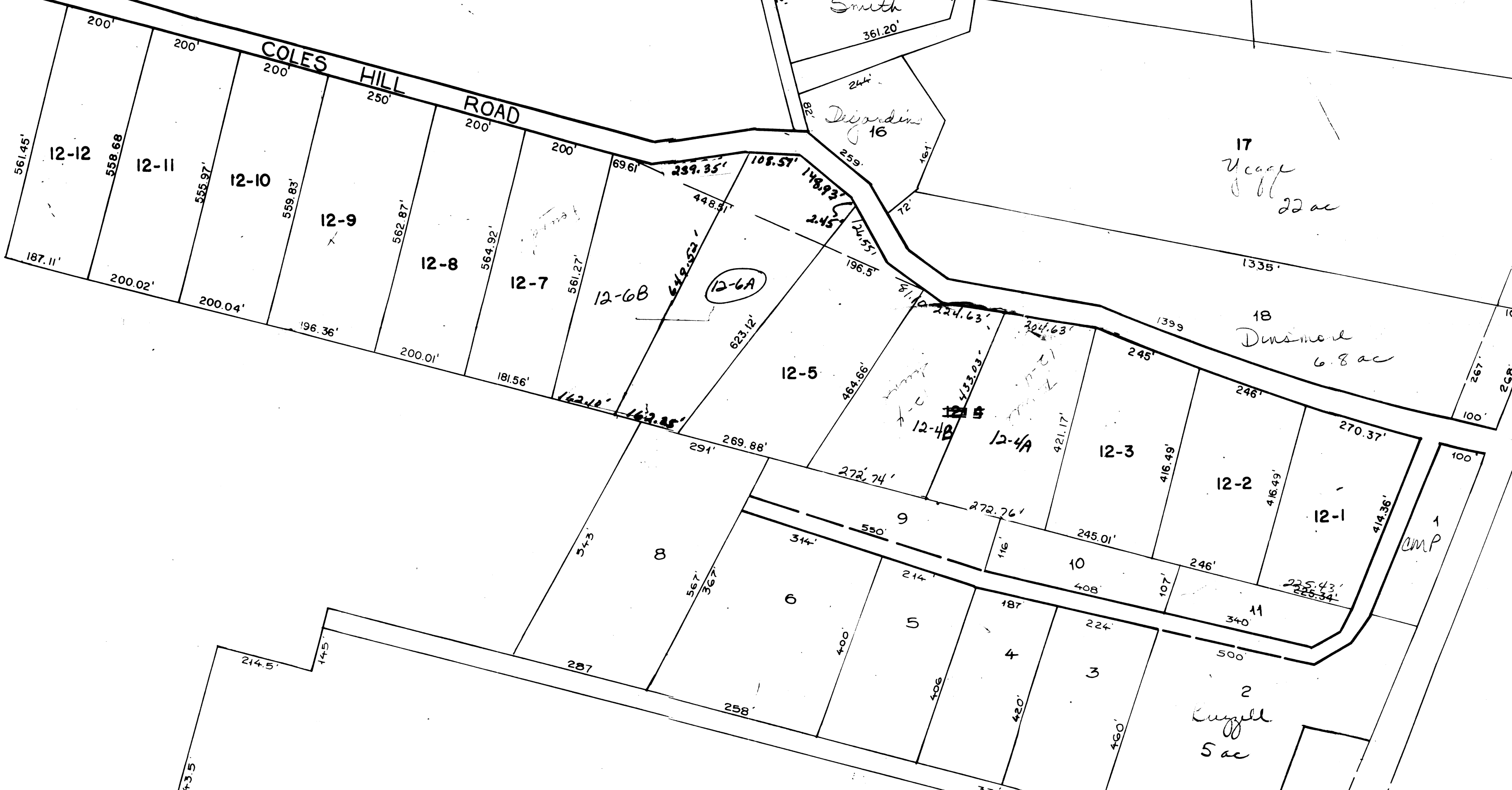
17B  
Smith  
361.20'

17c

17  
Veege  
22 ac

18  
Dimeed  
6.8 ac

13  
Stevens  
167 ac  
(Tree Growth)



14  
The Council of Churches  
40 ac  
(Tree Growth)

7  
MacLugal  
44 acres

SEE MAP 147

SEE MAP 144

ROUTE  
990

145

**LEGEND**

- PARCEL NUMBERS ..... 1
- ADJACENT MAPS ..... 2
- MATCH LINE ..... 3

For Assessment Purposes  
Not to be used for Conveyances

P/O 58-2

**PROPERTY MAP  
TOWN OF WELLS**

YORK COUNTY, MAINE

PREPARED BY

JAMES W. SEWALL COMPANY OLD TOWN, MAINE

SCALE 1 INCH = 200 ± FEET

OCT 29 1985