

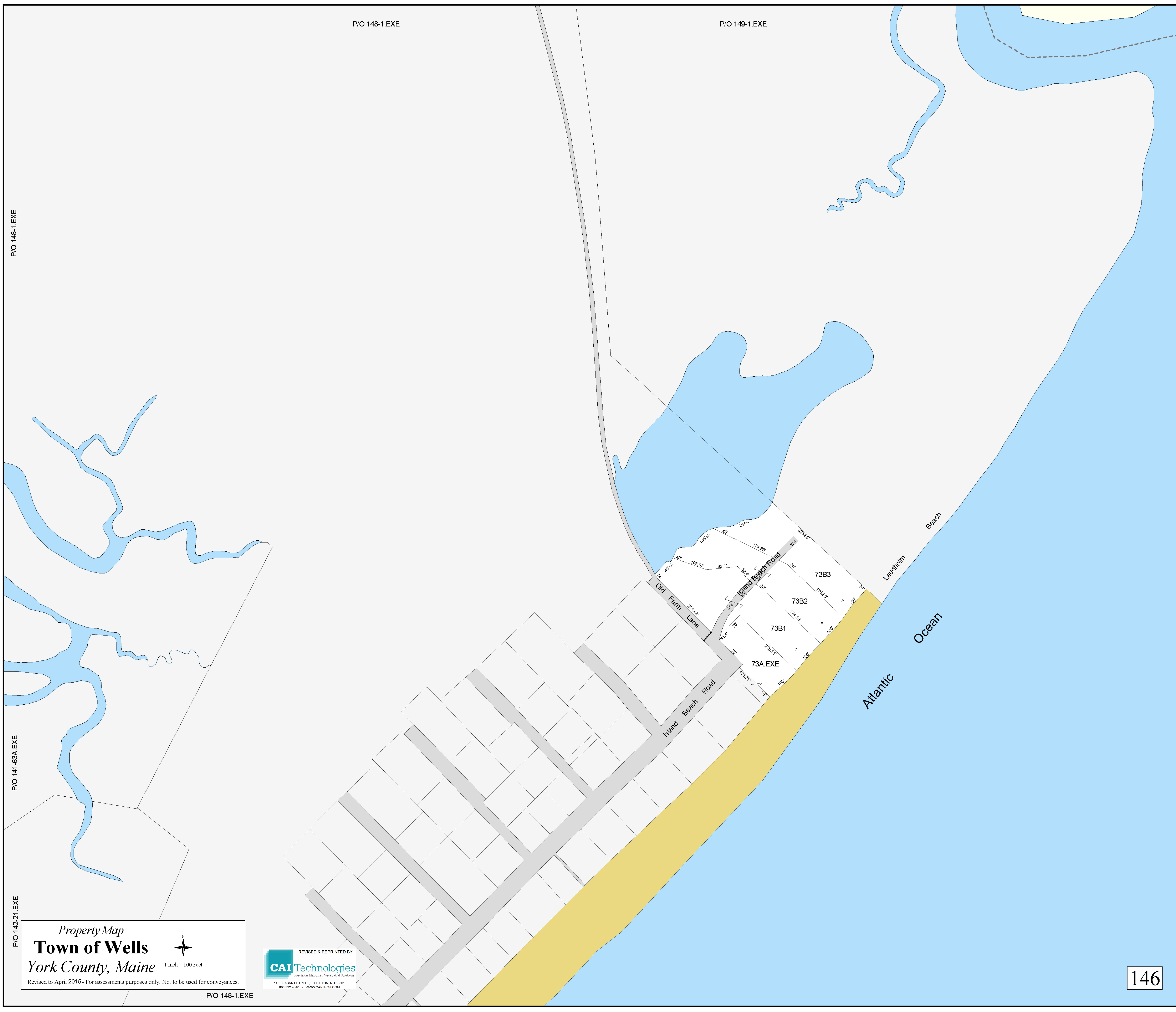
P/O 148-1.EXE

P/O 149-1.EXE

P/O 148-1.EXE

P/O 141-69A.EXE

P/O 142-21.EXE



Property Map
Town of Wells
 York County, Maine
 1 Inch = 100 Feet
 Revised to April 2015 - For assessments purposes only. Not to be used for conveyances.

REVISED & REPRINTED BY
CAI Technologies
 Precision Mapping. Geospatial Solutions.
 11 PLEASANT STREET, LITTLETON, NH 03061
 603.322.4546 - WWW.CAI-TECH.COM

P/O 148-1.EXE