

P/O 108-33.12

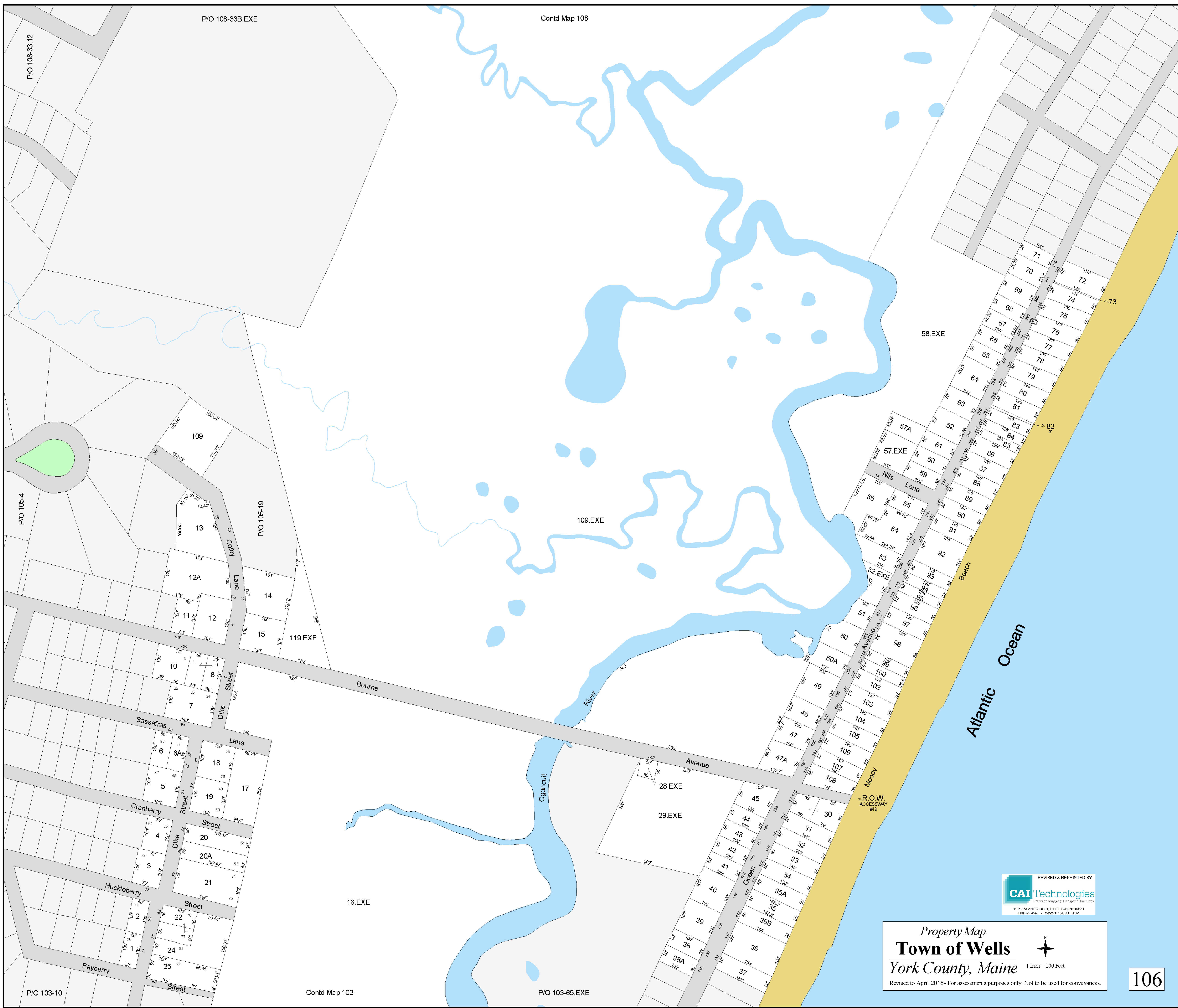
P/O 105-4

P/O 105-19

P/O 103-10

Contd Map 103

P/O 103-65.EXE



REVISED & REPRINTED BY
CAI Technologies
 Precision Mapping. Universal Solutions.
 11 PLAZA STREET, LITTLETON, NH 03581
 800.322.4540 - WWW.CAI-TECH.COM

Property Map
Town of Wells
 York County, Maine 1 Inch = 100 Feet
 Revised to April 2015 - For assessments purposes only. Not to be used for conveyances.