

P/O 19-25.12

P/O 19-2

P/O 19-25.10

P/O 19-25.8

P/O 19-25.6

P/O 13-25.5

P/O 13-25.4

P/O 13-25.3

P/O 13-26.6

P/O 13-26.5

P/O 13-26.4

P/O 13-26.3

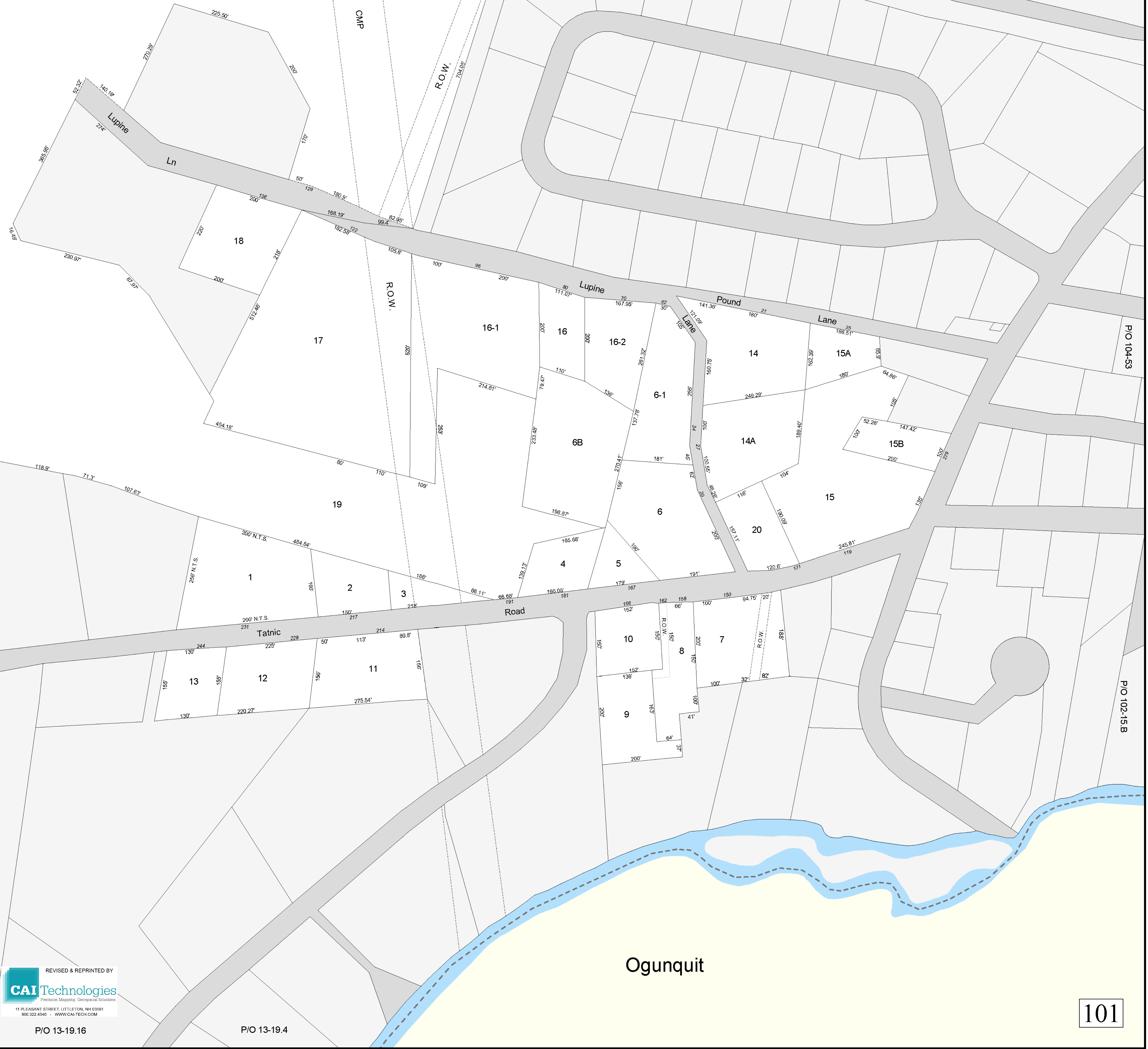
P/O 13-26.2

P/O 13-26.1

P/O 19-28

P/O 104-53

P/O 102-15B



Property Map
Town of Wells
 York County, Maine
 1 Inch = 100 Feet
 Revised to April 2015 - For assessments purposes only. Not to be used for conveyances.

REVISED & REPRINTED BY
CAI Technologies
 Precision Mapping. Geospatial Solutions.
 11 HADAMANT STREET, LITTLETON, NEW HAMPSHIRE
 800.322.4540 - WWW.CAI.TECH.COM

P/O 13-19.16

P/O 13-19.4

Ogunquit