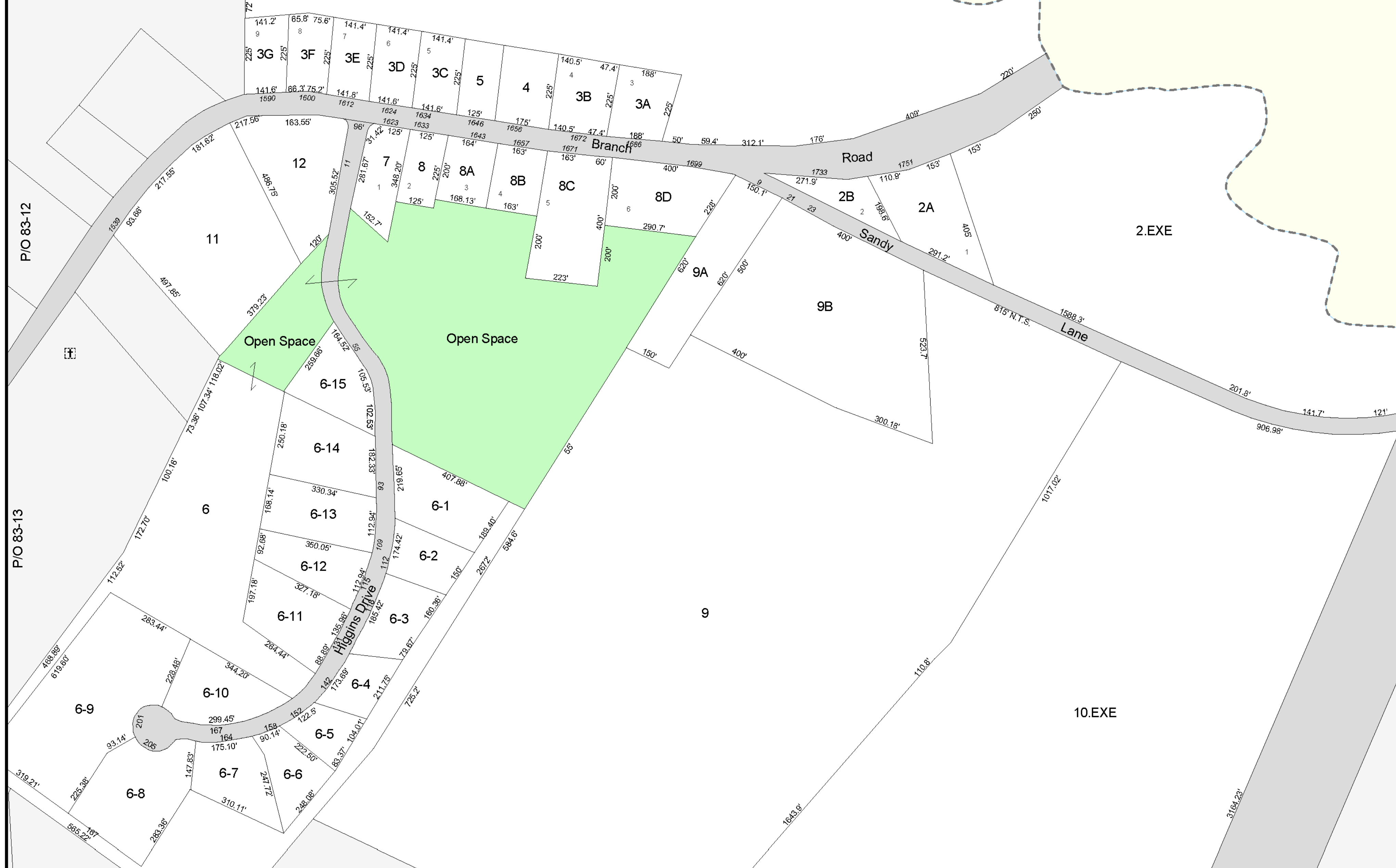


P/O 83-9

3.EXE

Kennebunk



REVISED & REPRINTED BY
CAI Technologies
 Precision Mapping. Geospatial Solutions.
 11 PLASANT STREET, LITTLETON, NH 03581
 800.322.4546 • WWW.CAI-TECH.COM

Property Map
Town of Wells
York County, Maine
 1 inch = 200 Feet
 Revised to April 2015- For assessments purposes only. Not to be used for conveyances.