

P/O 53-1

P/O 53-13A

P/O 53-13.1

P/O 53-11

P/O 53-11

P/O 45-6

P/O 45-7

P/O 45-10

P/O 45-8D

P/O 37-39

P/O 54-7D

P/O 54-7E

P/O 47-7C

P/O 47-7A

P/O 47-8

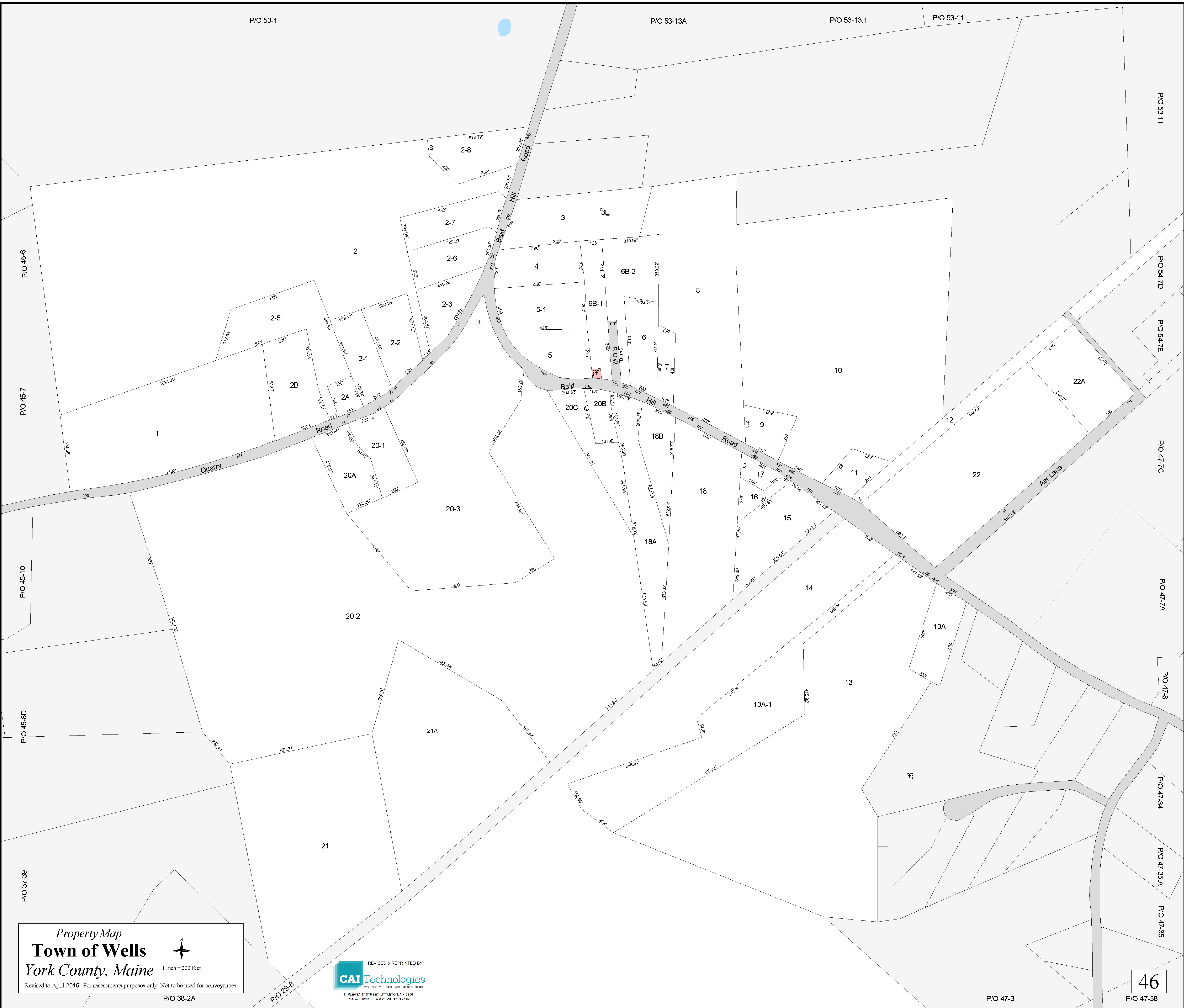
P/O 47-34

P/O 47-35 A

P/O 47-35

P/O 47-38

P/O 47-38



Property Map
Town of Wells
 York County, Maine
 Revised to April 2015 - For assessments purposes only. Not to be used for conveyances.
 1 Inch = 200 Feet
 P/O 38-2A

REVISED & REPRINTED BY
CAI Technologies
 Precision Mapping. Geopatial Solutions.
 11 PLEASANT STREET, LITTLETON, NH 03081
 603.322.4340 - WWW.CAITECH.COM