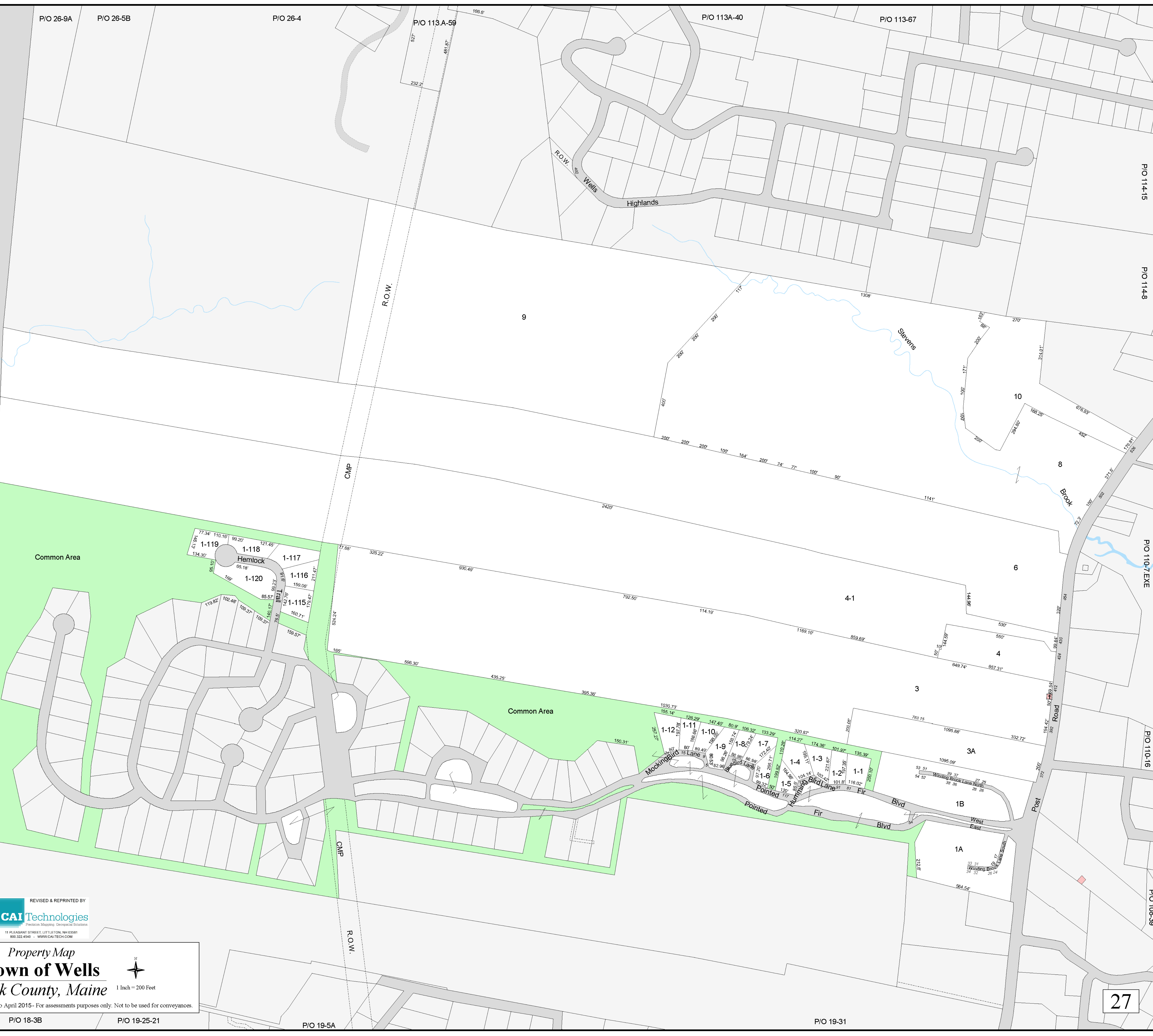


P/O 26-9A P/O 26-5B P/O 26-4 P/O 113A-59 P/O 113A-40 P/O 113-67

P/O 114-15
P/O 114-8
P/O 110-7-EXE
P/O 110-16
P/O 108-39

Maine Turnpike



P/O 19-31
P/O 19-5A

REVISED & REPRINTED BY
CAI Technologies
 Precision Mapping. Geospatial Solutions.
 11 PLEASANT STREET, LITTLETON, NH 03581
 800.322.4540 - WWW.CAITECH.COM

Property Map
Town of Wells
 York County, Maine

1 Inch = 200 Feet

Revised to April 2015- For assessments purposes only. Not to be used for conveyances.

P/O 18-3B P/O 19-25-21 P/O 19-5A P/O 19-31