

P/O 52-4.EXE

P/O 52-1.EXE

P/O 53-2

P/O 53-1.EXE

P/O 53-1

P/O 45-6

P/O 45-7A

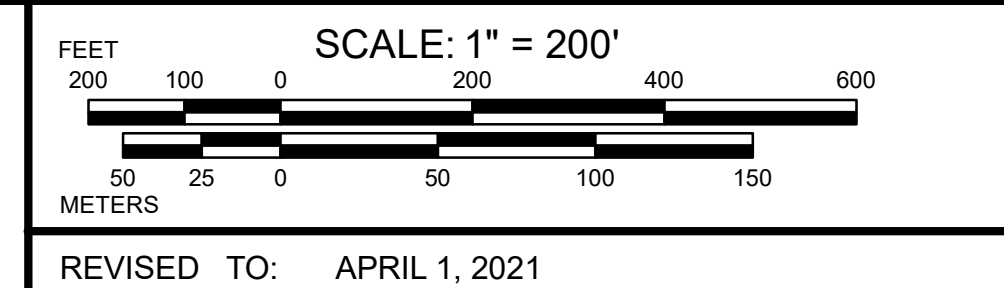
50.EXE

Blueberry Ridge Mobile village
Common Area

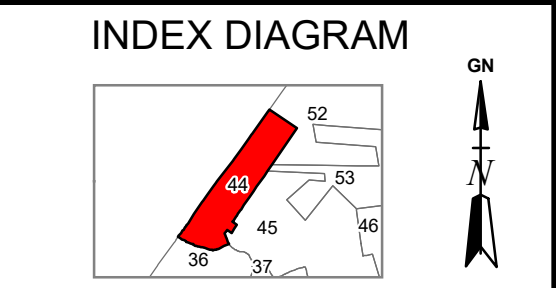
REVISÉ & REPRINTÉ BY
CAI Technologies
 Precision Mapping, Geospatial Solutions.
 11 Pleasant Street, Littleton, NH 03561
 603.922.4540 - www.cai-tech.com

LEGEND

RECORD DIMENSION 100'	RIGHT OF WAY/ACCESS	----- 600' -----
SUBDIVISION LOT NO. 2	COMMON OWNERSHIP	----- 100' -----
WATER [Blue Area]	BUILDING [House Icon]



PROPERTY MAPS
WELLS
 YORK COUNTY
 MAINE



MAP NO.
44

THIS MAP IS FOR ASSESSMENT PURPOSES. IT IS NOT VALID FOR LEGAL DESCRIPTION OR CONVEYANCE.
 THE HORIZONTAL DATUM IS THE MAINE STATE PLANE COORDINATE SYSTEM, NAD 83.
 ORIGINAL MAPPING BY WOODARD & CURRAN