

P/O 52-4.EXE

P/O 52-1.EXE

P/O 53-2

P/O 53-1.EXE

P/O 53-1

P/O 45-6

P/O 45-7A

50.EXE

Sanford Chase Ln

Acorn Drive

Blueberry Ridge Mobile village Common Area

Easy Street

Leslie Road

Blackback Lane

Mark Av

P/O 45-6 Common Area

5.EXE

22.EXE

P/O 36-15

P/O 36-13.3

THIS MAP IS FOR ASSESSMENT PURPOSES. IT IS NOT VALID FOR LEGAL DESCRIPTION OR CONVEYANCE.

THE HORIZONTAL DATUM IS THE MAINE STATE PLANE COORDINATE SYSTEM, NAD 83.

ORIGINAL MAPPING BY WOODARD & CURRAN

REVISED & REPRINTED BY



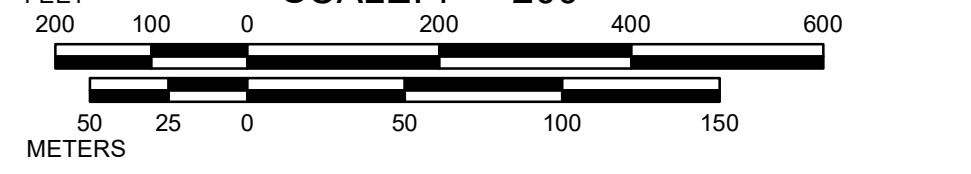
Precision Mapping, Geospatial Solutions.

11 Pleasant Street, Littleton, NH 03561
800.322.4540 - www.cai-tech.com

LEGEND

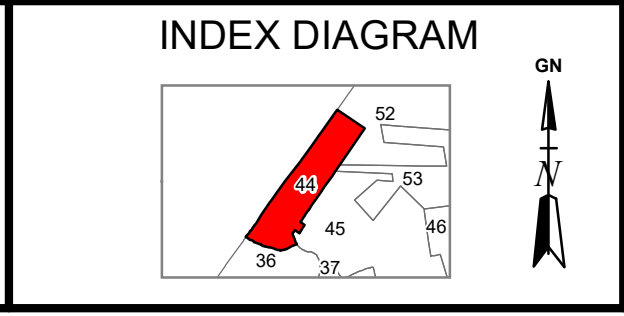
RECORD DIMENSION	1"	RIGHT OF WAY/ACCESS	
SUBDIVISION LOT NO.	2	COMMON OWNERSHIP	
WATER		BUILDING	

SCALE: 1" = 200'



REVISD TO: APRIL 1, 2020

PROPERTY MAPS
WELLS
YORK COUNTY
MAINE



MAP NO.
44