

P/O 72-9

P/O 73-2

P/O 73-3.EXE

P/O 73-5.EXE

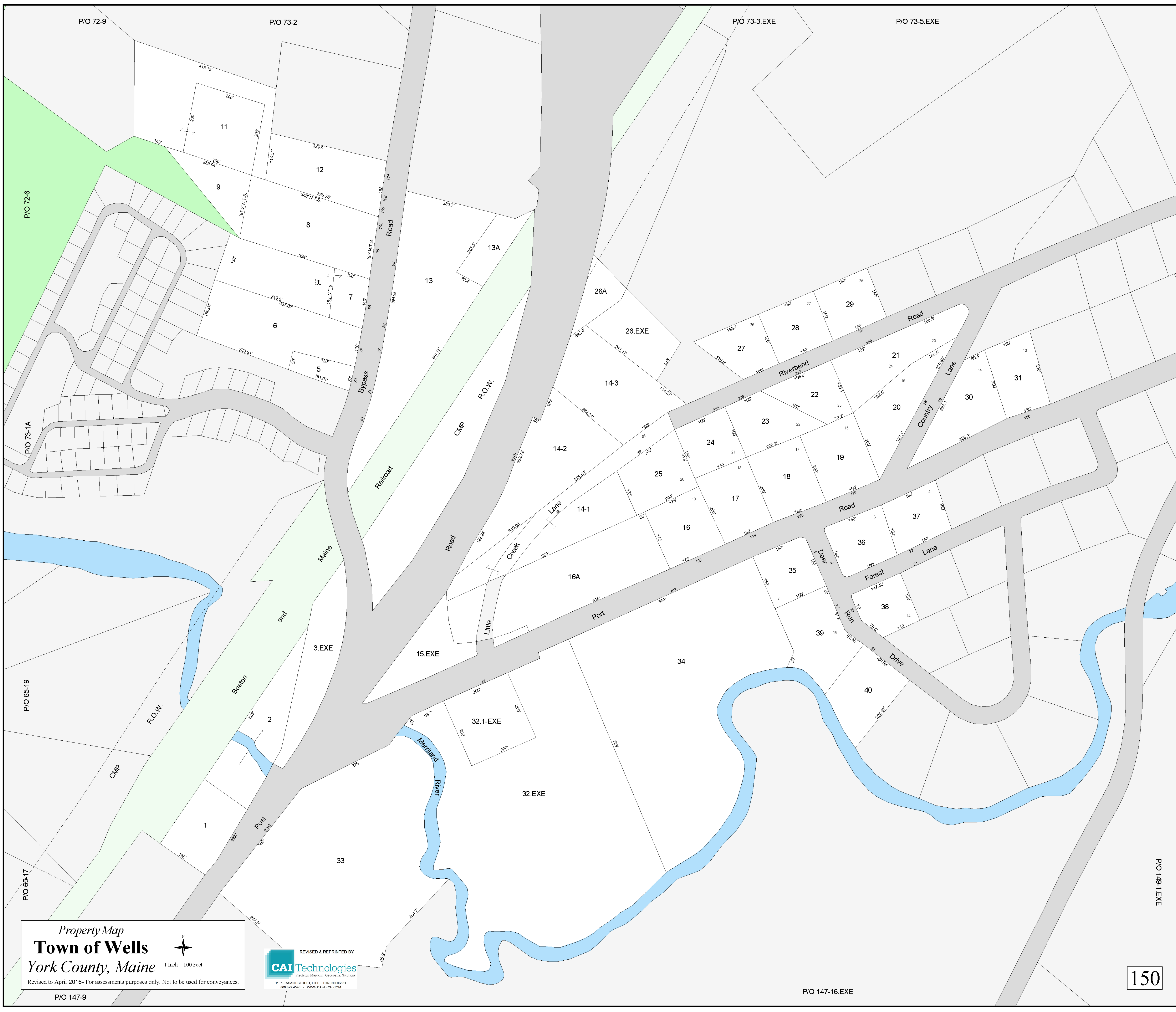
P/O 72-6

P/O 73-1A

P/O 65-19

P/O 65-17

P/O 149-1.EXE



Property Map
Town of Wells
York County, Maine
 1 Inch = 100 Feet
 Revised to April 2016- For assessments purposes only. Not to be used for conveyances.

REVISED & REPRINTED BY
CAI Technologies
 Precision Mapping. Geospatial Solutions.
 11 PLEASANT STREET, LITTLETON, NH 03811
 603.322.4540 - WWW.CAI-TECH.COM

P/O 147-16.EXE

P/O 147-9