

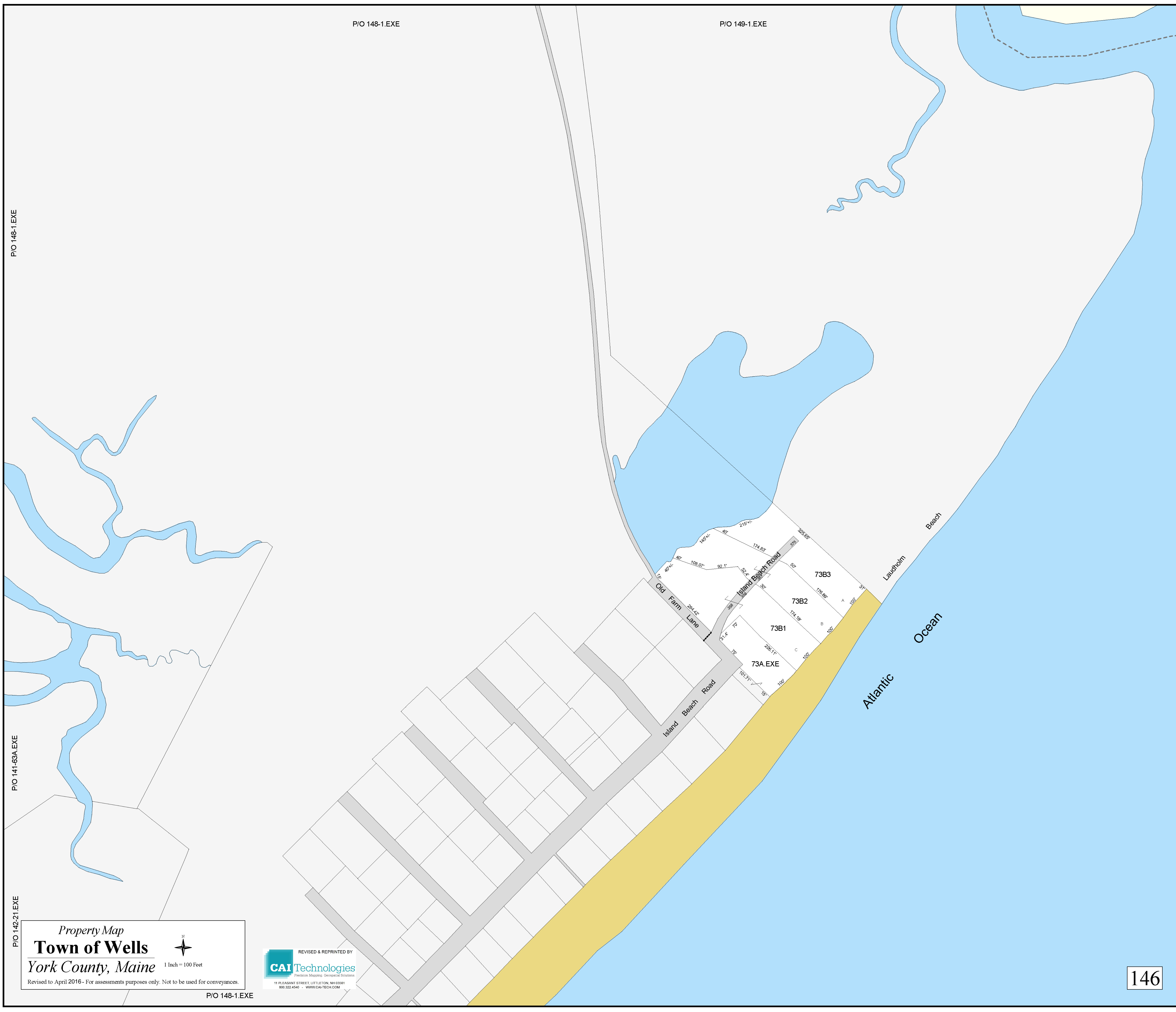
P/O 148-1.EXE

P/O 149-1.EXE

P/O 148-1.EXE

P/O 141-69A.EXE

P/O 142-21.EXE



*Property Map*  
**Town of Wells**  
 York County, Maine  
 1 Inch = 100 Feet  
 Revised to April 2016 - For assessments purposes only. Not to be used for conveyances.

REVISED & REPRINTED BY  
**CAI Technologies**  
 Precision Mapping. Geospatial Solutions.  
 11 PLEASANT STREET, LITTLETON, NH 03061  
 603.322.4546 - WWW.CAITECH.COM

P/O 148-1.EXE