

P/O 58-2

P/O 65-7

P/O 144-2

P/O 147-1

P/O 147-26

P/O 65-20

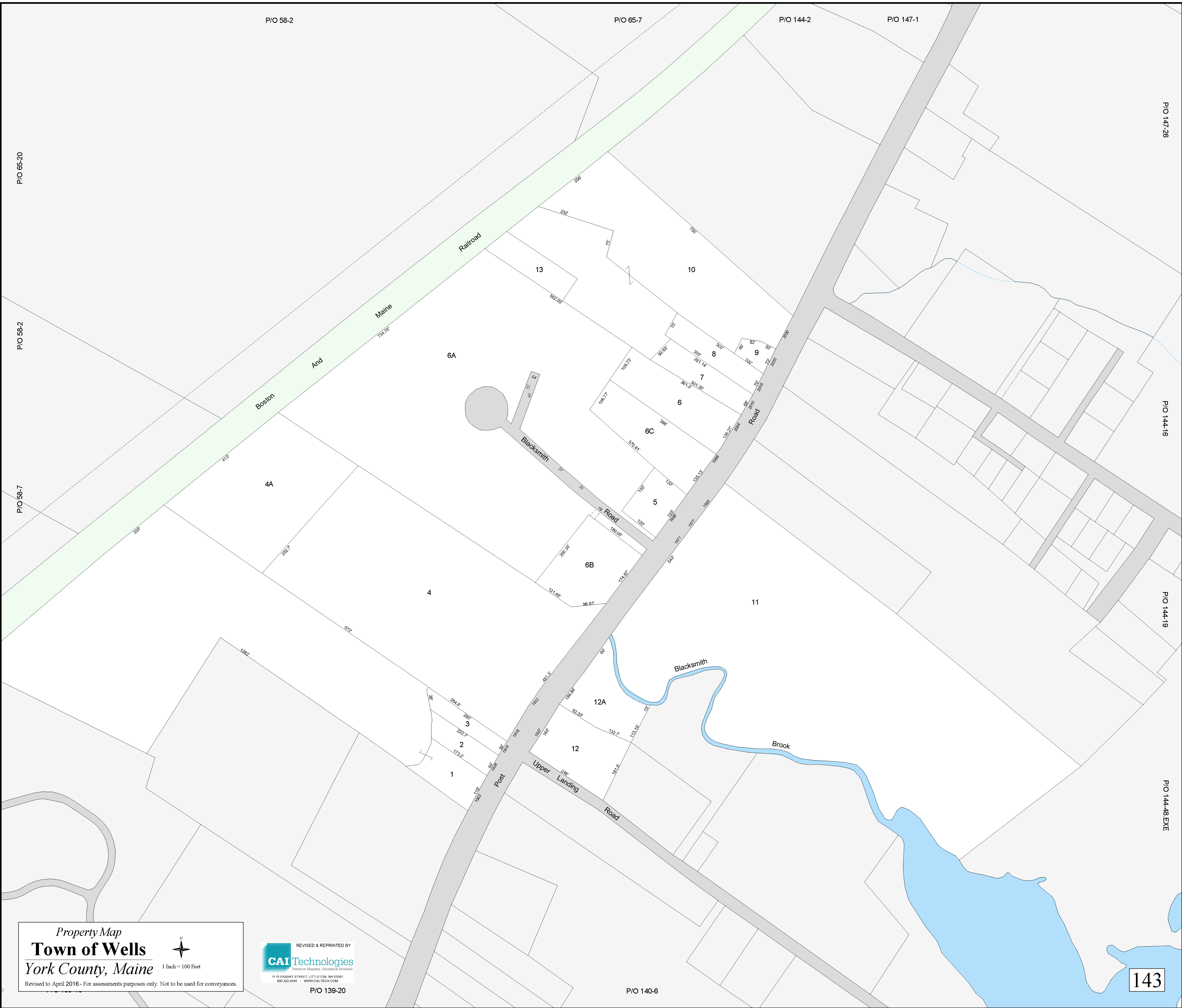
P/O 58-2

P/O 66-7

P/O 144-16

P/O 144-19

P/O 144-18 EXE



Property Map
Town of Wells
 York County, Maine
 1 Inch = 100 Feet
 Revised to April 2016 - For assessments purposes only. Not to be used for conveyances.

REVISED & REPRINTED BY
CAI Technologies
 Production Mapping Geospatial Solutions
 11 PLASANT STREET, LITTLETON, NH 03041
 800.322.4540 - WWW.CAITECH.COM

P/O 139-20

P/O 140-6