

P/O 21-1A

P/O 37-2

P/O 30-1

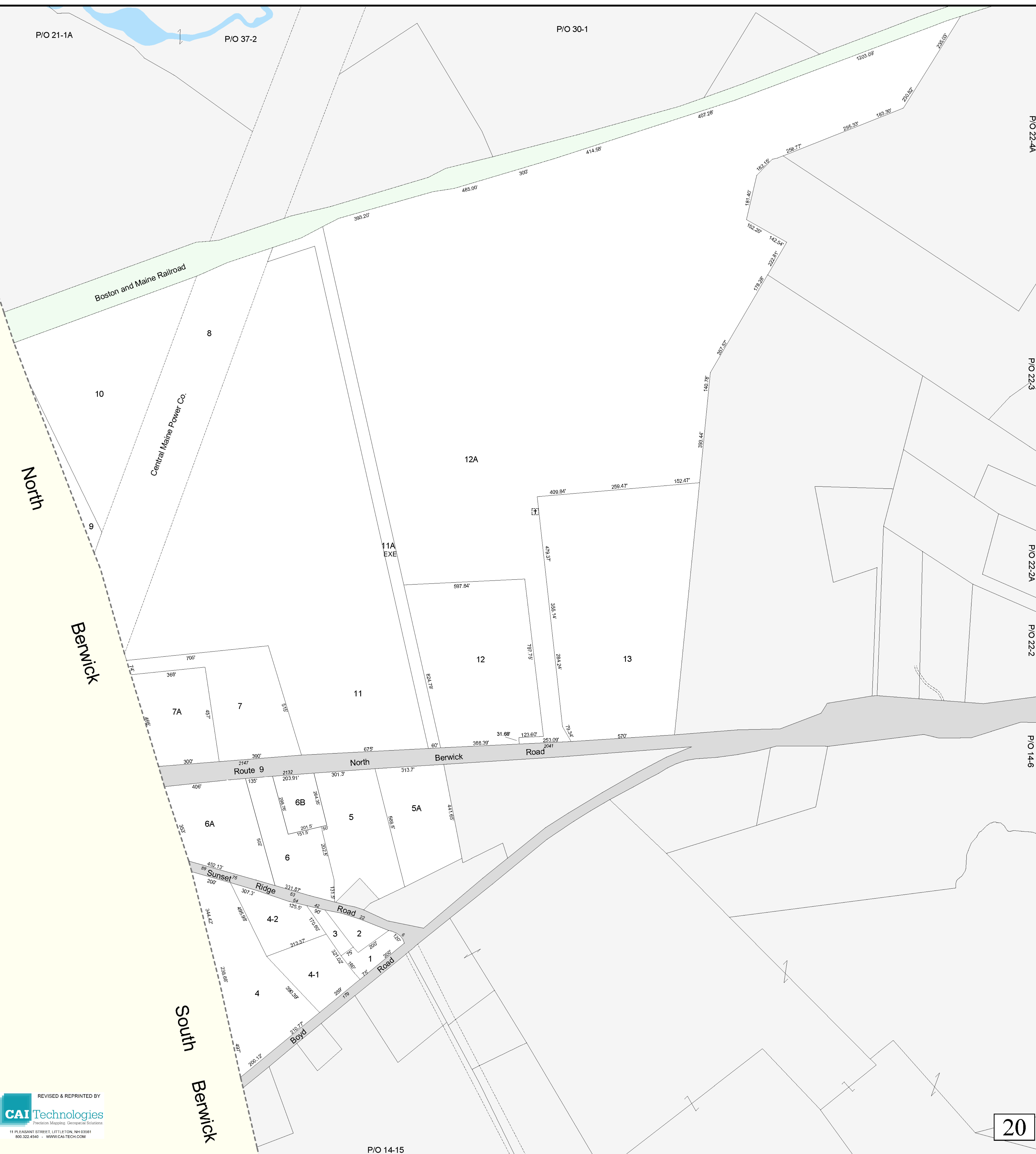
P/O 22-4A

P/O 22-3

P/O 22-2A

P/O 22-2

P/O 14-6



North

Berwick

South  
Berwick

Boston and Maine Railroad

Central Maine Power Co.

11A  
EXE

Route 9

North Berwick Road

Sunset Ridge Road

Boyd Road

Property Map  
**Town of Wells**  
 York County, Maine  
 1 Inch = 200 Feet  
 Revised to April 2016- For assessments purposes only. Not to be used for conveyances.

REVISED & REPRINTED BY  
**CAI Technologies**  
Professional Mapping Geospatial Solutions  
 11 PLASANT STREET LITTLETON, NH 03081  
 800.322.4546 - WWW.CAI-TECH.COM