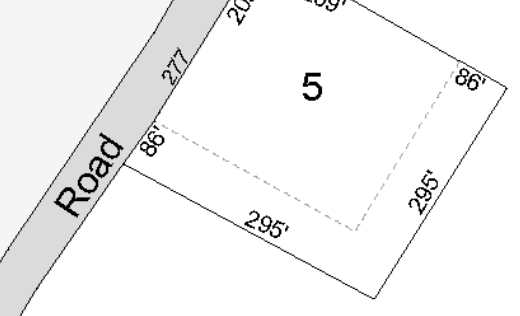


P/O 9-7

P/O 16-6

P/O 16-7

Hill Road



1

7

8

[THIS IS MATCHLINE W MAP 11]

3

4

6

P/O 11-30

P/O 11-19

P/O 11-32

P/O 11-3A

P/O 11-2

P/O 9-6

P/O 9-7A

P/O 9-12

P/O 4-9

P/O 4-10

P/O 4-12A-1

P/O 4-11

P/O 4-8A

P/O 4-7.2

P/O 4-7.1

Property Map
Town of Wells
 York County, Maine
 1 Inch = 200 Feet
 Revised to April 2016- For assessments purposes only. Not to be used for conveyances.

REVISED & REPRINTED BY
CAI Technologies
 Precision Mapping. Geospatial Solutions.
 11 PLEASANT STREET, LITTLETON, NH 03581
 800.322.4540 - WWW.CAI-TECH.COM

P/O 4-6.1

P/O 4-5.1

P/O 4-13

P/O 4-14

P/O 4-3

P/O 4-2

P/O 4-2.1

P/O 4-2.2

P/O 4-1

P/O 4-1B

P/O 4-1A

P/O 4-19A

P/O 4-19

P/O 5-8

P/O 11-32

P/O 11-31

2-2

2-3

2-1

2-4

2-5