

P/O 27-3A

P/O 110-15

P/O 110-16

P/O 110-20

P/O 112-10

P/O 27-1.1B

P/O 27-1

P/O 19-11.1

P/O 19-11

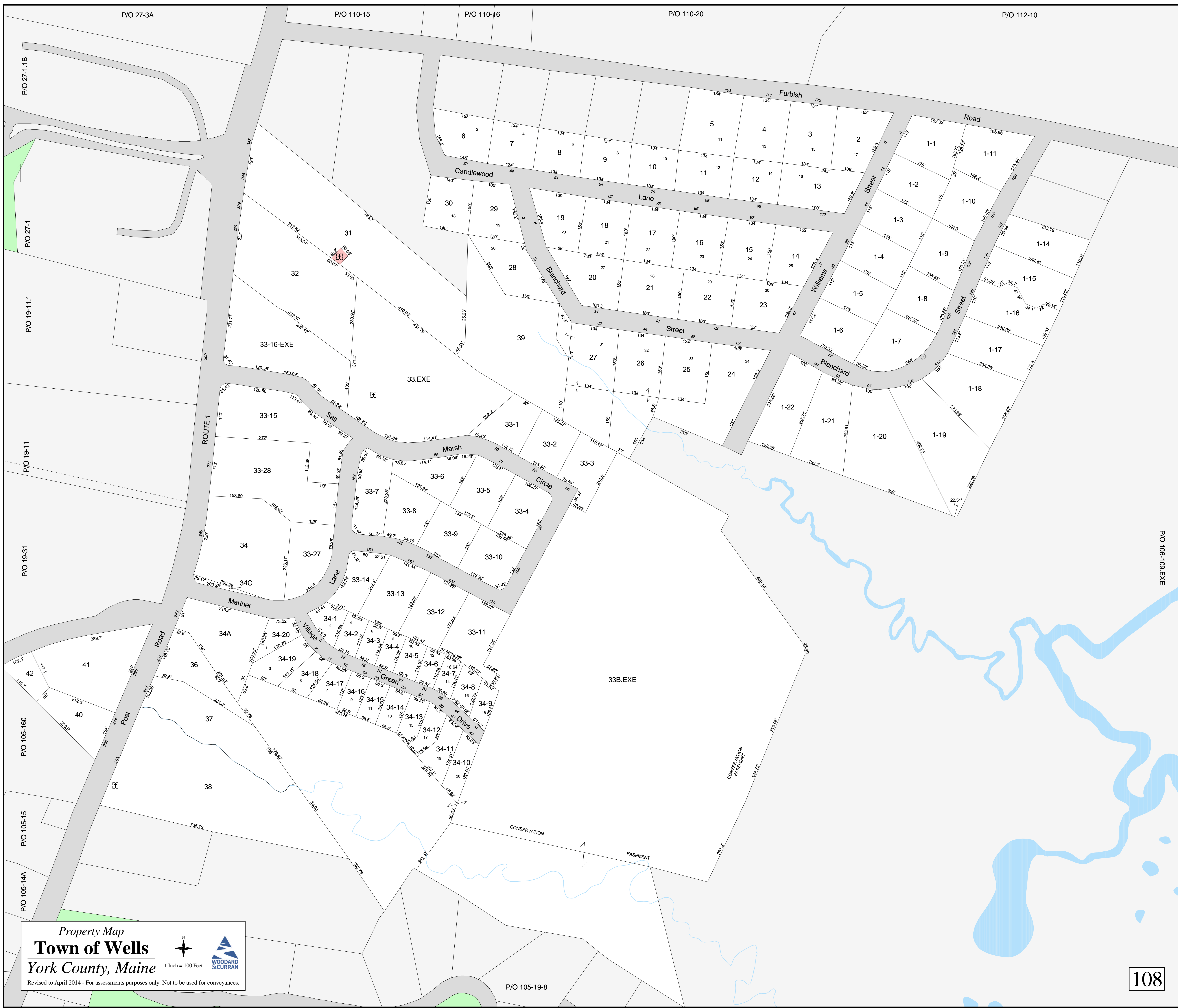
P/O 19-31

P/O 105-160

P/O 105-15

P/O 105-14A

P/O 106-109 EXE



Property Map  
**Town of Wells**  
 York County, Maine

1 Inch = 100 Feet

WOODARD & CURRAN

Revised to April 2014 - For assessments purposes only. Not to be used for conveyances.

P/O 105-19-8